

Amphenol

Enabling the Electronics Revolution

Amphenol

2024

Amphenol Corporation

THE 2ND LARGEST INTERCONNECT COMPANY IN THE WORLD

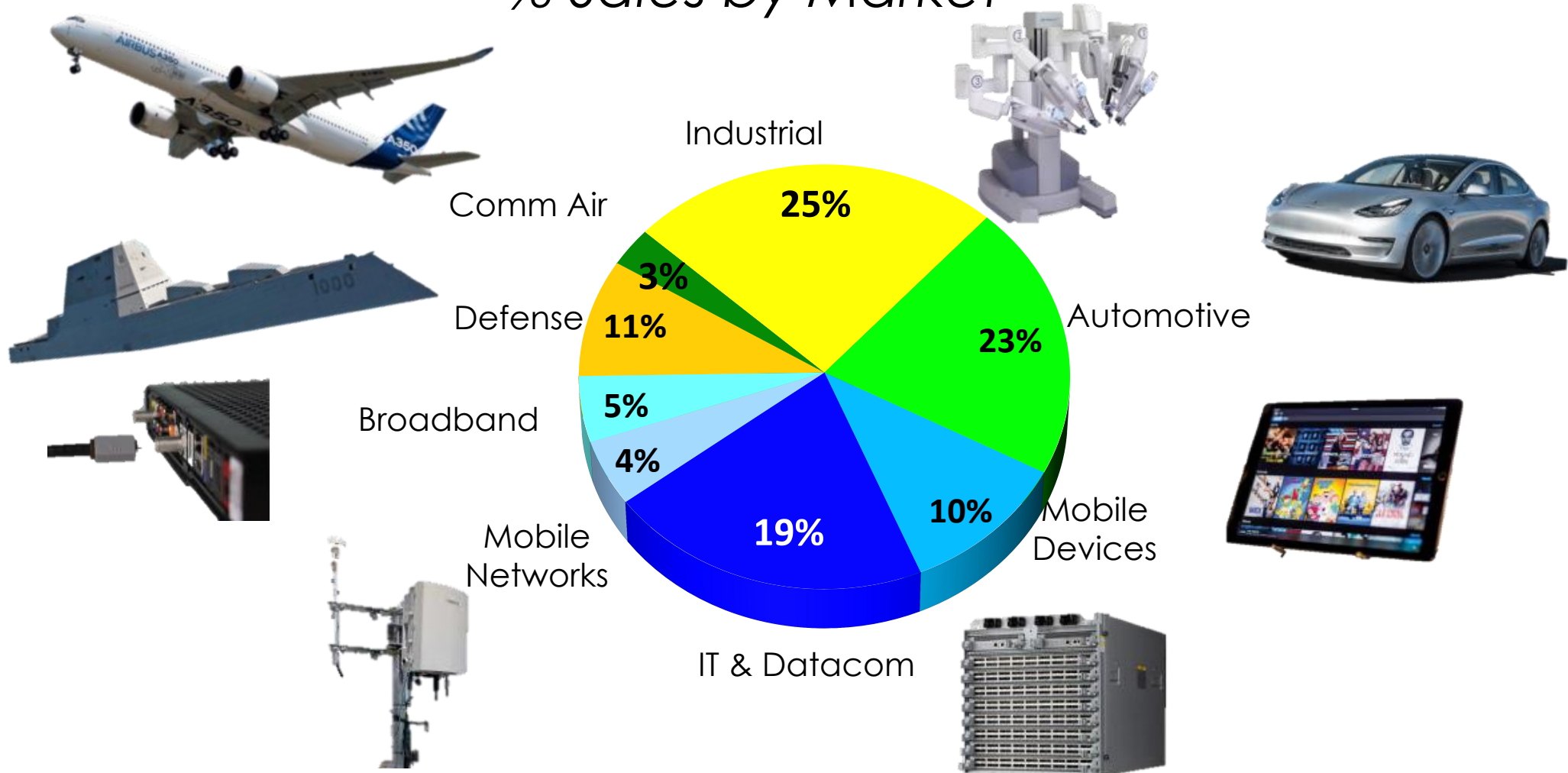
- Amphenol Corporation was founded in 1932, Chicago. The 2nd largest interconnect company in the world, Head office is in Connecticut.
- 1991 listed on NYSE. Because of its perfect performance, Feb 10th 2006 was named as “Amphenol Day”.
- More than 95,000 employees worldwide.
- Total sales 2023: US **\$12.6** billion



R. Adam Norwitt
President and Chief Executive Officer

Market Leader in Interconnect

% Sales by Market

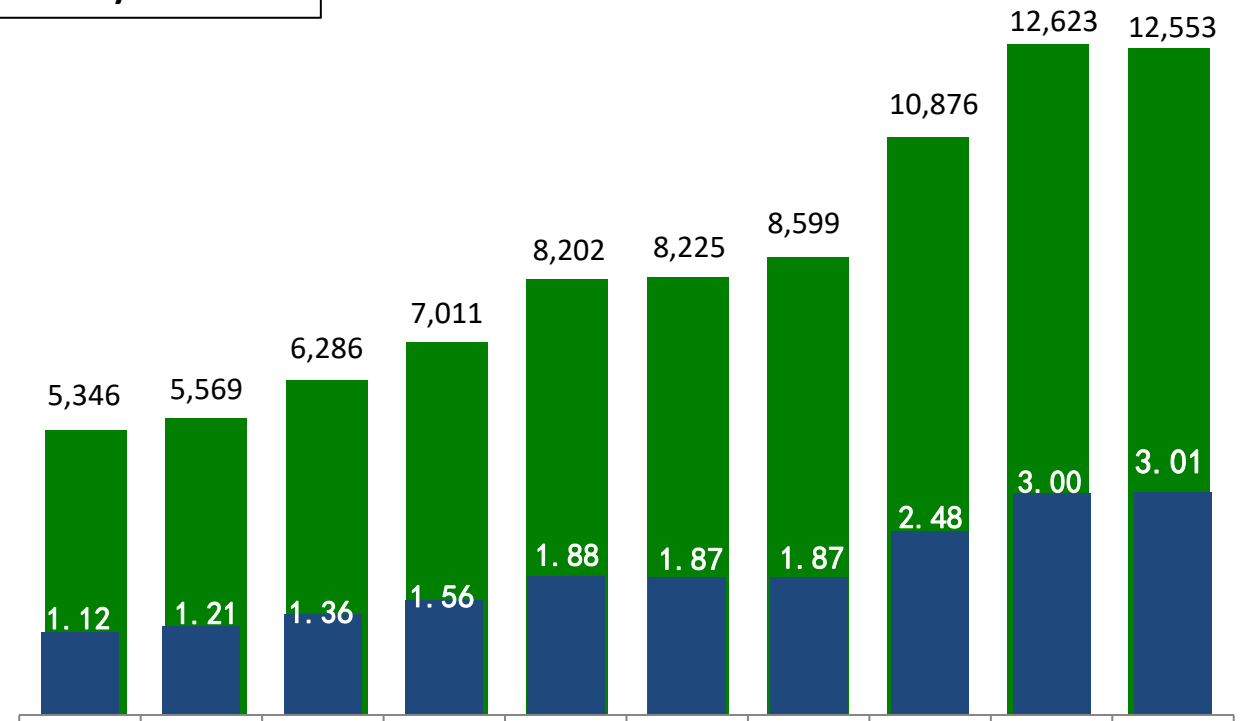


Excellent Record of Achievements

- Industry leading growth for over a decade
- Industry leading operating profit margins in all business cycles
- Strong cash flow generation
- Successful acquisition program in consolidating industry

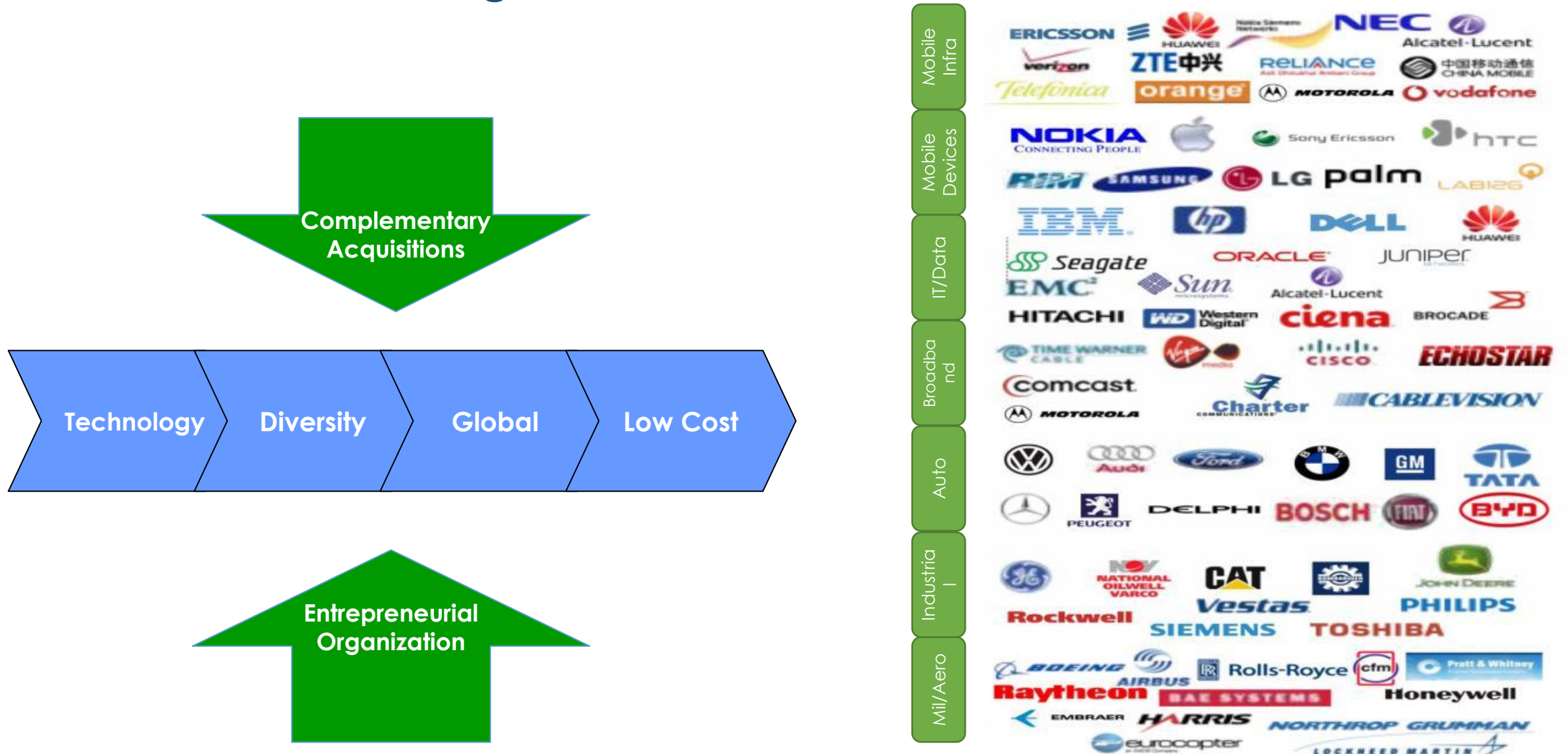
10 Year CAGR	
Sales	11%
EPS	12%
>2X Industry Growth	

Net Sales (\$ in millions)
Adjusted Diluted EPS (\$)^{(1) (2)}



(1) Adjusted for stock split effective March 2021
(2) Excluding one-time items

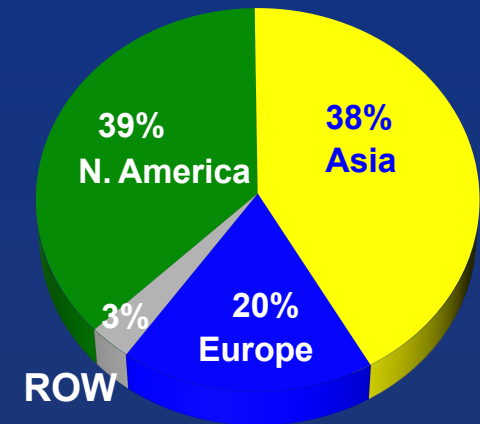
High Performance Strategy



Expanding Global Presence



% Sales By Region



2023 Sales
\$12.6 Billion

~ 95,000 Employees

MORE PRODUCT BETTER SERVICE GLOBAL CONNECTOR



AIO CHINA - 2024

www.amphenol-sine.com.cn
www.amphenol-cz.cn

AIIO China

Amphenol International Industrial Operation includes three business units that are called as Sine, CATI and AAL.

Our products sold at home and abroad. They are widely used in industrial diagnostic, automotive, electric vehicle, overloaded connections, telecommunications, audio, military fields and so on.

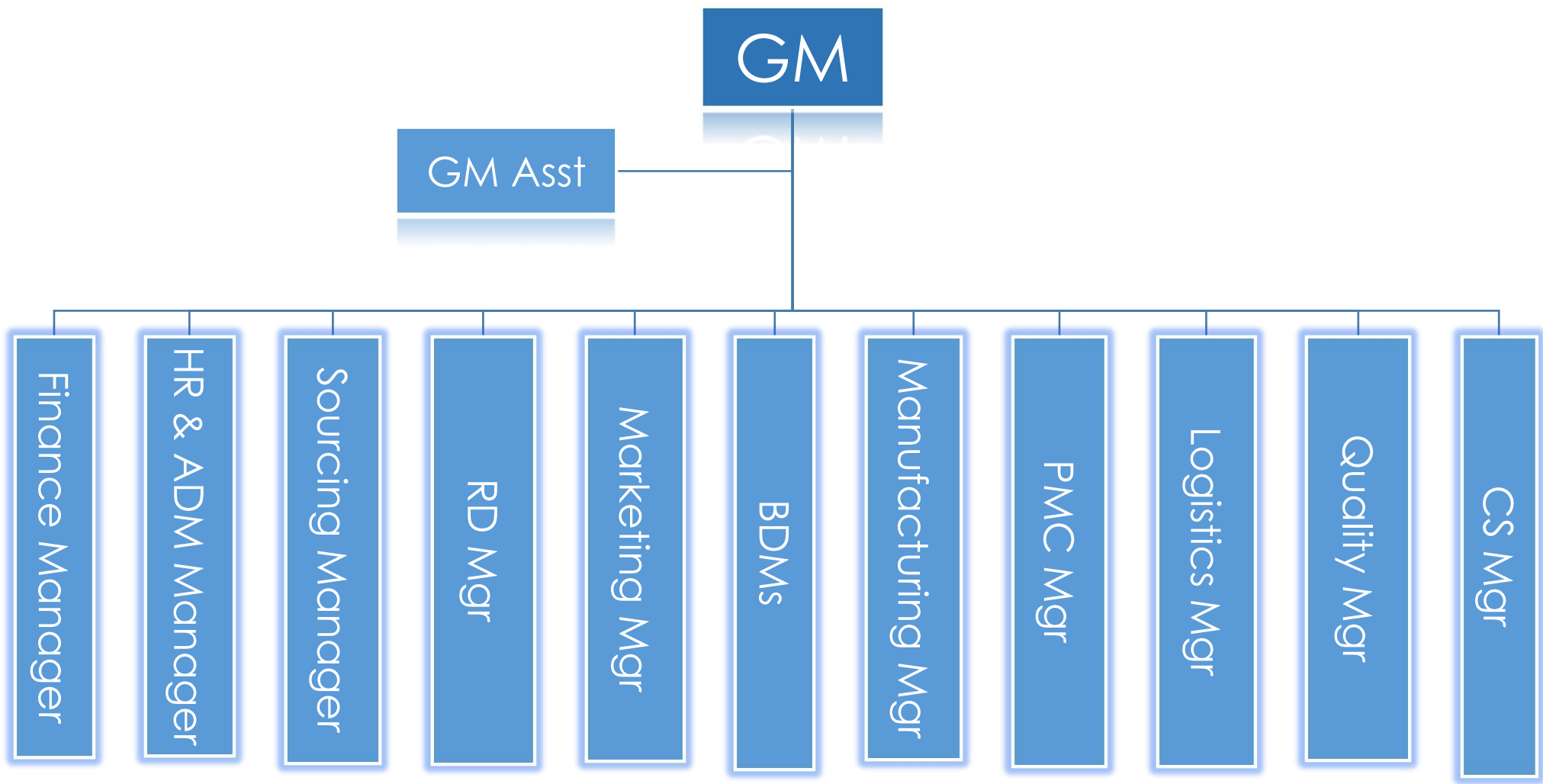
- Gross area 10000 m²
- Area
 - Production 5000 m²
 - Warehouse 2000 m²
 - Others (office etc) 2000 m²
- Over 600+ employees



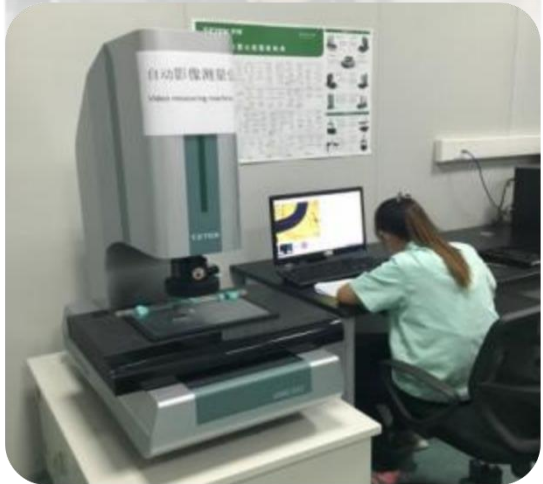
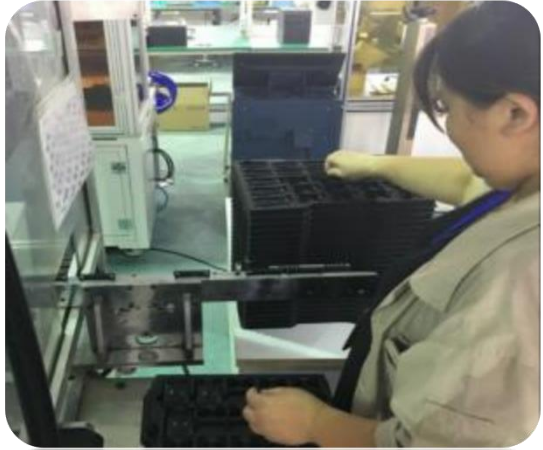
Sine SZ Team



AIIO CZ Team



Workplace in Changzhou



Ecomate - RT360 Series

RT360 industrial circular connectors are designed to meet the requirements of MIL-C-26482 series military specification. Based on our superior build quality, high-performance capabilities, it has been developed to be completely compatible with all other existing standard products industry-wide. This series is a wide used connectors for the automotive, electric vehicles, robotics, military, welding industries and other demanding interconnect applications.

Technical Data

- Operating Temperature: : -40°C to $+105^{\circ}\text{C}$ or -40°C to $+125^{\circ}\text{C}$
- Suitable For Indoor and Outdoor Applications
- 500 Mating Cycles
- IP67&IP69K rated in mated condition
- Circular metal bayonet lock. Able to withstand extreme vibration and mechanical shock.
- Alternate keying positions available. Five positions (N, W, X, Y, Z)
- EMI/RMI shielding capability with appropriate backshell / Unshielded capability with plastic end cap
- *UL1977. ROHS compliant*



RT Series

Technical Data

- 8 shell sizes & 25 insert configurations
- With standard insert arrangements & mixed power and signal arrangements.
- 8 contact size, Rated Voltage 500V AC/DC, 45A, 10~12AWG
- 2.5mm contact size, Rated Voltage 500V AC/DC, 23A, 12~14AWG
- 16 contact size, Rated Voltage 500V AC/DC, 13A, 14~26AWG
- 20 contact size, Rated Voltage 250V AC/DC, 7.5A(machined), 5A(stamped & formed), 20~30AWG



RT0W Series



Technical Data

- Mated with MIL-C-26482 series connector
- 5 shell sizes & 5 insert configurations
- High density arrangements from 6~32 contacts.
- 20 contact size, Rated voltage 250V AC/DC, Rated current 7.5A(machined), 5A(stamped & formed), 20~30AWG

RTS Series



Technical Data

- 6 shell sizes
- With standard insert arrangements & mixed power and signal arrangements.
- 8 contact size, Rated voltage 500V AC/DC, Rated current 45A, 10~12AWG
- 2.5mm contact size, Rated voltage 500V AC/DC, Rated current 23A, 12~14AWG
- 16 contact size, Rated voltage 500V AC/DC, Rated current 13A, 14~26AWG
- 20 contact size, Rated voltage 250V AC/DC, Rated current 7.5A(machined), 5A(stamped & formed), 20~30AWG

FLS Series

Technical Data

- 3 shell sizes
- With standard insert arrangements & mixed power and signal arrangements.
- 8 contact size, Rated voltage 500V AC/DC, Rated current 45A, 10~12AWG
- 2.5mm contact size, Rated voltage 500V AC/DC, Rated current 23A, 12~14AWG
- 16 contact size, Rated voltage 500V AC/DC, Rated current 13A, 14~26AWG
- 20 contact size, Rated voltage 250V AC/DC, Rated current 7.5A(machined), 5A(stamped & formed), 20~30AWG



RTHP Series

Technical Data

- 4 Shell Sizes • High Reliability
- Features Amphenol's **RADSOK®** contact technology
- Single Pole High Power Arrangements; 3.6mm-10mm Contact Sizes
- 3.6mm contact size, Rated voltage 630V AC/DC , Rated current 86A
- 6.0mm contact size, Rated voltage 630V AC/DC , Rated current 120A
- 8.0mm contact size, Rated voltage 630V AC/DC , Rated current 180A
- 10.0mm contact size, Rated voltage 630V AC/DC , Rated current 300A



Stator & Replacement tool

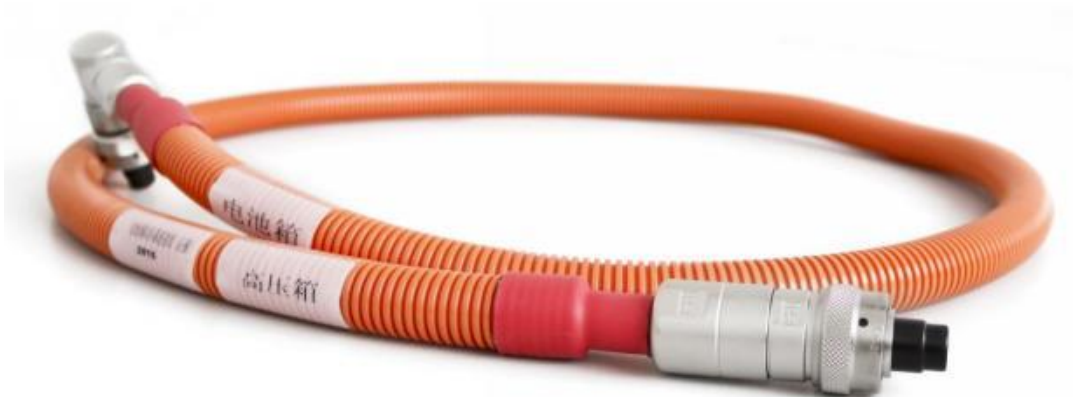


料号 Part number	描述 Description	图片 Picture
RT-1208	PIN SPACER, SIZE 12, 8 POS, WHITE	
RT-1210	PIN SPACER, SIZE 12, 10 POS, WHITE	
RT-2028	PIN SPACER, SIZE 20, 28 POS, WHITE	
RT-2448	PIN SPACER, SIZE 24, 48 POS, WHITE	

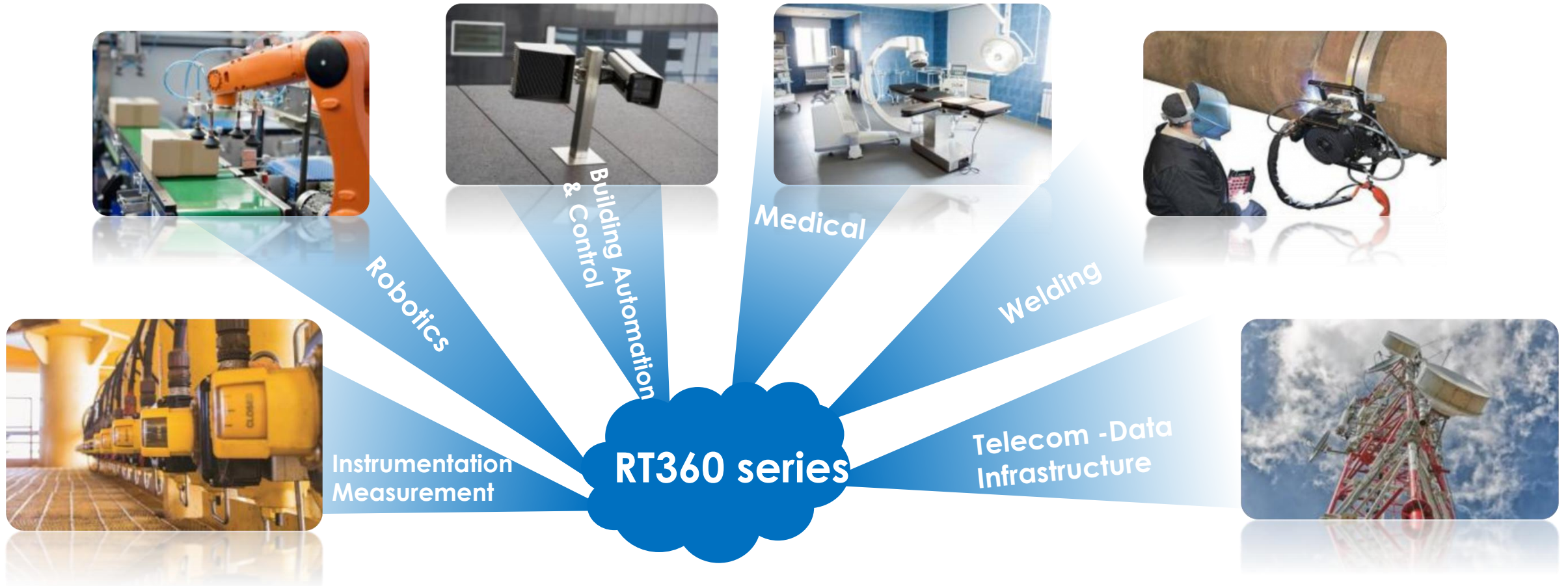
料号 Part number	描述 Description	图片 Picture
FT-1208	PIN , SIZE 12, 8 POS, WHITE	
FT-1210	PIN , SIZE 12, 10 POS, WHITE	
FT-2028	PIN , SIZE 20, 28 POS, WHITE	
FT-2448	PIN , SIZE 24, 48 POS, WHITE	

The above part number is only shown, if you need other holes, please contact your sales representative.

Cable assembly with RTHP connectors



Applications of RT360 series



Applications of RT360 series



RT360 series success story



- **Country:** China
- **Application:** Power battery system
- **Product:** RTS/A series



RT360 series success story



- **Country:** China
- **Application:** Storage Energy Cabinet
- **Product:** RTS series

RT360 series success story



- **Country:** China
- **Application:** 80W ground radar receiver
- **Product:** RTHP161, RTHP203, M12-Xcode , RT143, RT103



RT360 series success story



- **Country:** China
- **Application:** Fish species monitoring system
- **Product:** RTS series



RT360 series success story



- **Country:** Thailand
- **Application:** BMS for E-Ferry
- **Product:** RT 4P, 19P & RTHP 70sqmm



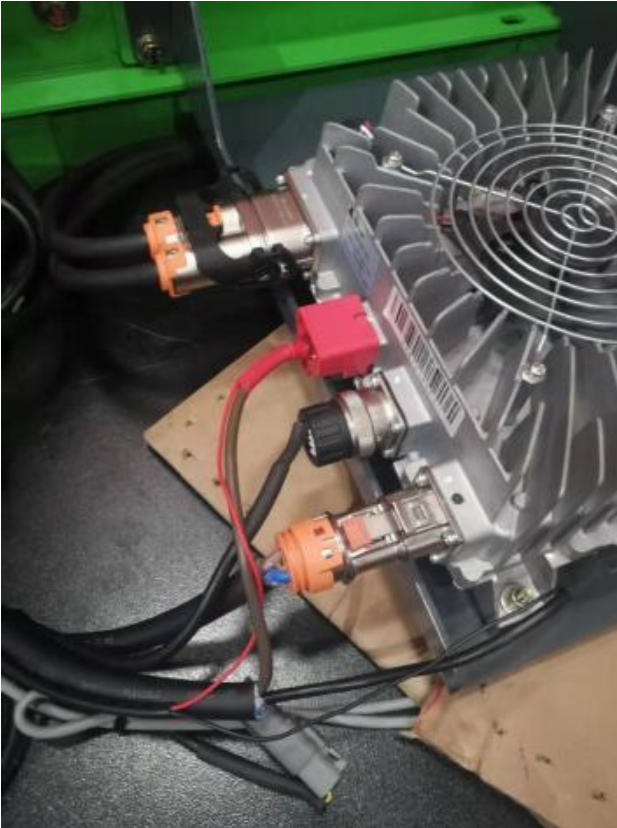
RT360 series success story



- **Country:** Japan
- **Application:** Electric car batteries
- **Product:** P80939, P80940



RT360 series success story



- **Country:** China
- **Application:** Electric climbing vehicle
- **Product:** RT14-12



RT360 series success story



- **Country:** China
- **Application:** Battery pack
- **Product:** RT12-8



RT360 series success story



- **Country:** China
- **Application:** PDU distribution box, excellence golf cart
- **Product:** RT22-28

RT360 series success story

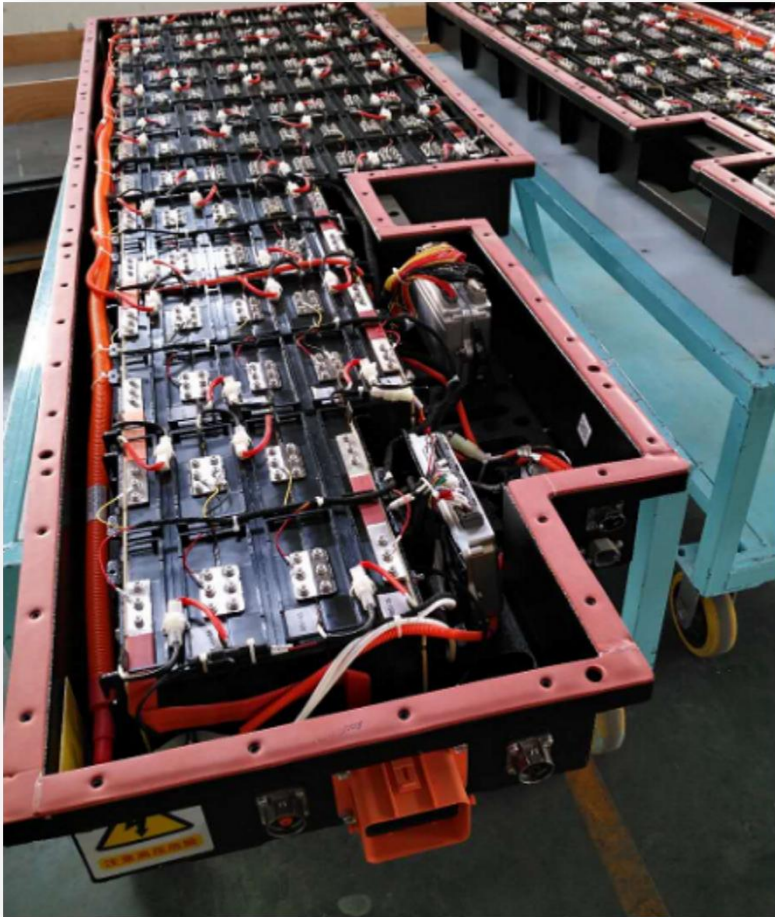


- **Country:** India
- **Application:** Electric vehicle wiring harness
- **Product:** RTS/AT2P/ATP2P



RT360 series success story

- **Country:** China
- **Application :** Battery Pack
- **Product:** RT 16-19, AT 6PIN



RT360 series success story



- **Country:** China
- **Application :** Electric off-road motor
- **Product:** RT 4P, 9P & RT0W 10 P



RT360 series success story



- **Country:** China
- **Application :** EV Car
- **Product:** RTS 10-6 & RT 12-8



RT360 series success story



- **Country:** China
- **Application :** EV Car(lin-box)
- **Product:** RT 12-2, 12-4, 12-8, 14-3,14-4



RT360 series success story



- **Country:** China
- **Application :** OBC
- **Product:** RT 2P,4P,6P & 8P



RT360 series success story



- **Country:** China
- **Application :** Motor low voltage signal line
- **Product:** RT 16-19



RT360 series success story



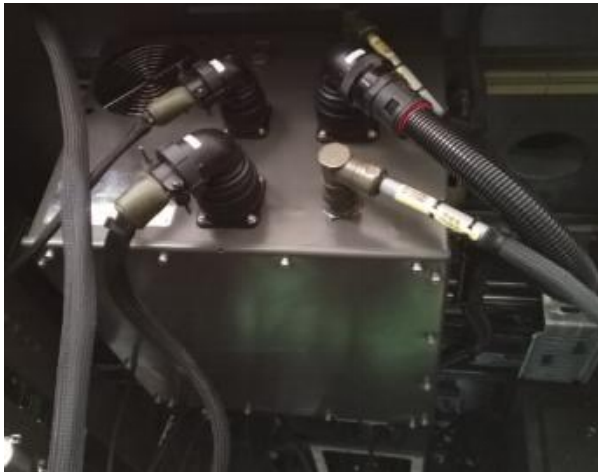
- **Country:** China
- **Application :** Rail transit gate control system
- **Product:** RT series



RT360 series success story



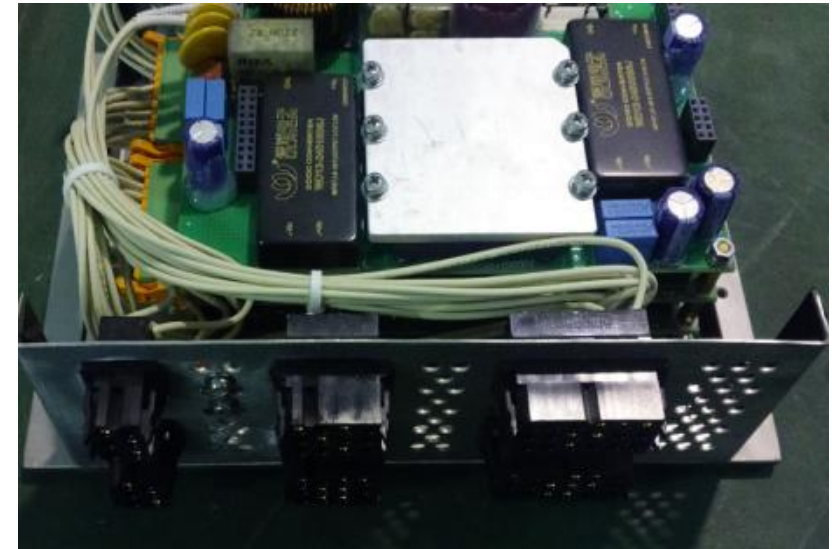
- **Country:** China
- **Application :** The control system of maglev train
- **Product:** RT series



RT360 series success story



- **Country:** China
- **Application :** EMU controller and smoke control system
- **Product:** AEM & RT series



RT360 series success story



- **Country:** China
- **Application :** Cable assembly on EV BUS
- **Product:** RT series



RT360 series success story



- **Country:** China
- **Application :** Electric motor control system
- **Product:** RTHP0161P*, RTHP6161S*



RT360 series success story



- **Country:** China
- **Application :** Battery pack
- **Product:** RTHP6161



RT360 series success story



- **Country:** China
- **Application :** High-voltage board
- **Product:** RTHP16-1/RT-1619/RT-164/RT-144



RT360 series success story



- **Country:** China
- **Application :** Mercedes modified car
- **Product:** RT-122



RT360 series success story

- **Country:** China
- **Application :** Machine controller
- **Product:** RTHP16-1



- **Country:** China
- **Application :** Battery
- **Product:** RTHP16-1



RT360 series success story

- **Country:** China
- **Application :** Robot wire harness
- **Product:** RT series



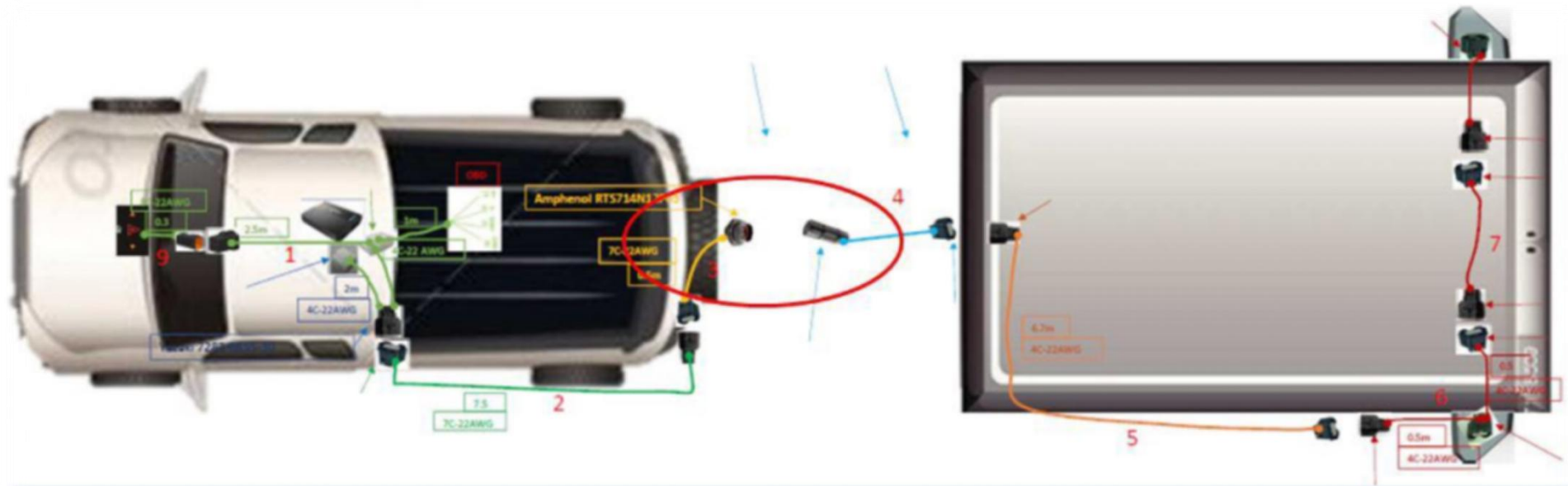
- **Country:** China
- **Application :** Robot
- **Product:** RT series



RTS series success story



- **Country:** China
- **Application:** Automotive Monitoring Systems
- **Product:** RTS 14-12



A series connectors

Designed with SAE-J2030, Amphenol Sine connectors A series are a high-performance, cost-effective solution able to be used in a variety of interconnect applications: Heavy Duty, Transportation, Marine, Diagnostic, Military, Alternative Energy and Agricultural.

Technical Data

- Operating Temperature: : -55°C to $+125^{\circ}\text{C}$
- Suitable For Indoor and Outdoor Applications
- 100 Mating Cycles
- IP67&IP69K rated in mated condition
- *UL1977. ROHS compliant*



AT Series



Technical Data

- 2, 3, 4, 6, 8, 12, 15, 18 positions available
- Rating voltage: 250V AC/DC according to IEC
500V AC/DC according to UL 1977
- 16 contact size, 13A, 14~20AWG
- Wire to panel, wire to wire available
- Thermoplastic, Flammability Rating: UL94, V-0

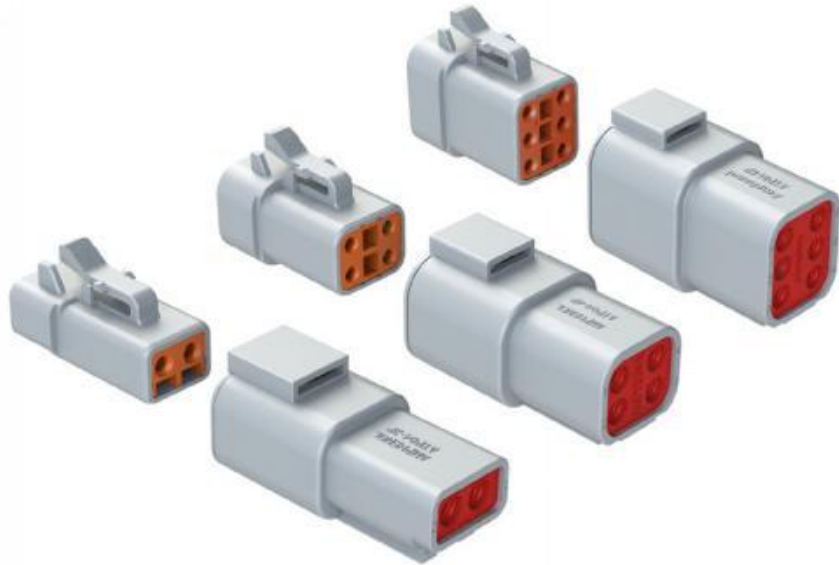
ATM Series



Technical Data

- 2, 3, 4, 6, 8, 12 positions available
- Rating voltage: 250V AC/DC according to IEC
500V AC/DC according to UL 1977
- 20 contact size, 7.5A, 16~22AWG
- Wire to panel, wire to wire available
- Thermoplastic, Flammability Rating: UL94, V-0

ATP Series



Technical Data

- 2, 4, 6 positions available
- Rating voltage: 250V AC/DC according to IEC
500V AC/DC according to UL 1977
- 12 contact size, 25A, 10~14 AWG
- Wire to panel, wire to wire available
- Thermoplastic, Flammability Rating: UL94, V-0

AS Series



Technical Data

- 8, 14, 23, 35 positions available
- Rating voltage: 250V AC/DC according to IEC
500V AC/DC according to UL 1977
- Max operating current 10A, 16~20AWG
- A,B,C,D,E Key are available
- Thermoplastic, Flammability Rating: UL94, V-0

ATS Seires



Technical Data

- 26, 34pin; A/B key available
- 20 contact size , 7.5A , 16-22AWG
- Rating voltage: 250V AC/DC according to IEC
500V AC/DC according to UL 1977
- Temperature Range: -55° ~ +125°

ATV Series



Technical Data

- 18 positions available
- Rating voltage: 250V AC/DC according to IEC
500V AC/DC according to UL 1977
- 16 contact size, 13A, 14~20AWG
- Wire to panel, wire to wire available
- Thermoplastic, Flammability Rating: UL94, V-0

ATV Series



Technical Data

Application : BMS and Controller Box

- 38 positions available
- Rating voltage: 250V AC/DC according to IEC
500V AC/DC according to UL 1977
- 16 contact size, 6 power contacts, 13A, 14~26AWG
32 power contacts, 2A, 20~22AWG
- Wire to panel available
- Thermoplastic, Flammability Rating: UL94, V-0

ATHD Series



Technical Data

- Single position
- Rating voltage: 250V AC/DC according to IEC
600V AC/DC according to UL 1977
- 4 contact size, 100A , 6AWG
- 8 contact size, 60A , 8~10AWG
- 12 contact size, 25A , 10~14AWG
- Wire to panel, wire to wire available



AHD Series



Technical Data

- 6,9 positions available
- Rating voltage: 250V AC/DC according to IEC
500V AC/DC according to UL 1977
- 6 position: match with 12 contact size , 25A, 10~14AWG
- 9 position: match with 16 contact size, 13A, 14~20AWG
- High-performance, cost-effective
- **SAE J1939** protocol standard
- Ideal for controlled/uncontrolled environmental conditions

AHDP Series



Technical Data

- 24 Shell: 7, 9, 14, 16, 18, 19, 21, 23, 27, 29, 31, 35, 47 positions available
- 18 Shell: 6, 8, 14, 20, 21 position available
- Rating voltage: 250V AC/DC according to UL 1977
- 4 contact size, 100A, 6AWG
- 8 contact size, 60A, 10~12AWG
- 12 contact size, 25A, 10~14AWG
- 16 contact size, 13A, 14~20AWG
- 20 contact size, 7.5A, 16~22AWG
- High density signal and mixed power insert configurations
- Bulkhead mounting or In-line
- Reverse and standard arrangements

AHDM Series

Technical Data

- 24 Shell: 7, 9, 14, 16, 18, 19, 21, 23, 27, 29, 31, 35, 47 positions available
- 18 Shell: 6, 8, 14, 20, 21 position available
- Rating voltage: 250V AC/DC according to UL 1977
- 4 contact size, 100A, 6AWG
- 8 contact size, 60A, 10~12AWG
- 12 contact size, 25A, 10~14AWG
- 16 contact size, 13A, 14~20AWG
- 20 contact size, 7.5A, 16~22AWG
- High density signal and mixed power insert configurations
- Bulkhead mounting or In-line
- Reverse and standard arrangements



Plastic PanelMate connectors



Technical Data

- AT series 2, 3, 4, 6, 8, 12 , 18 positions: 16 contact size, 13A
- AT series 13 position: 12 contact size, 25A; 16 contact size, 13A
- ATP series 2 and 4 positions: 12 contact size, 25A
- ATV series 18 positions: 16 contact size, 13A
- ATM series 12 positions : 20 contact size, 7.5A
- ATHD series 8# 12# panel waterproof connector
- Harsh environment applications

Flange Mount series

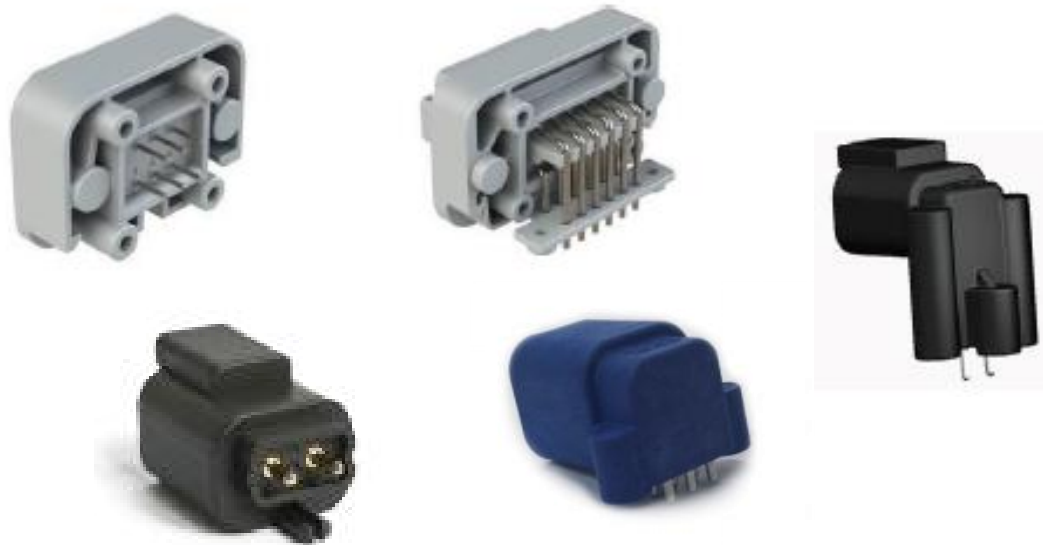


Technical Data

- AT series 2, 3, 4, 6, 8, 12 positions: 16 contact size, 13A
- ATM series 12 position: 20 contact size, 7.5A
- ATP series 4 position: 12 contact size, 25A
- Harsh environment applications

PCB series

- The AT Family offers printed circuit board (PCB) connectors that are heavy duty environmentally sealed connectors designed for wire-to-circuit board connections. Available in a variety of styles for the AT and ATM connector series, Amphenol PCB connectors cover a range of pin counts from 2 to 12 and wire gauges from 14 to 22. Many of the connectors are available in straight or 90° pin options.



Technical Data

- AT series 2, 4, 6, 8, 12 ,13 ,18 positions
- ATM series 2, 3, 4, 6, 8, 12 positions
- ATP series 2,4 positions
- Straight or 90° pin options

AT Speed Splices series

- Our AT Speed Splices offer a unique single terminal solution, which is designed to protect connections from dirt, dust, and water immersion up to 1 meter. Used in harsh environments, such as the construction, mining, marine, and agricultural industries, Jiffy Splices are easy to install and help quickly repair damaged electrical connections on equipment at the jobsite. options.

Technical Data

- Single position
- 12 contact size, 25A , 12~14AWG
- 16 contact size, 25A , 12~14AWG



Hyperbuss series

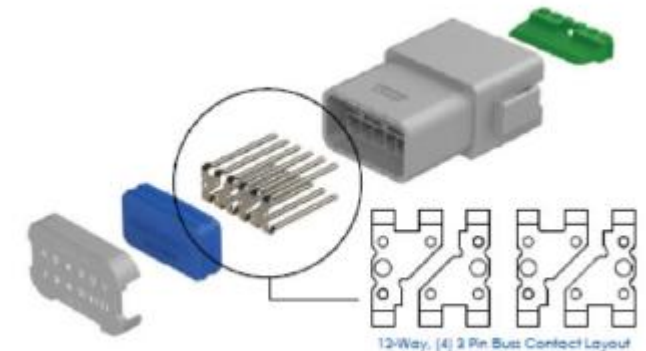
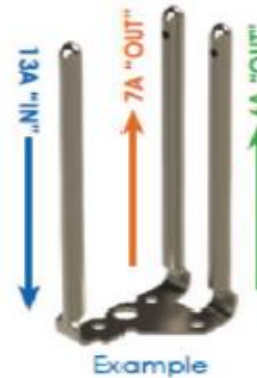
- HYPERBUSS is bussing product which based on our AT series, all power or data to be fed into a connector through one or more terminals. Provide multiple independent electrical circuits. The connectors are available in multiple buss configurations using standard size 16 contacts, with plating options in nickel or gold.

A single HYPERBUSS connector can replace several standard connectors or splices, saving space, wiring, and weight.

HYPERBUSS product be able to mating with AT plug, meet all performance specifications for AT series.

Technical Data

- AT series 2, 4, 6, 8, 12 positions
- Distribute the current



Extended Body AT Plugs Designed for Overmolding

- Custom Cable Assemblies are available for any application, and carry with them the capabilities of being overmolded in any size or length necessary. 2 pin, 4 pin, 6 pin, 8 pin and 12pin overmold connectors are available now, which are developed for overmolding cable assembly easily.



With diode and resistor series

- Amphenol AT connectors with diodes and resistors are useful anywhere you need to regulate power or protect a device against a potential power surge.
- A diode allows current to flow in one direction only. By preventing current from traveling a circuit in the wrong direction, a diode can protect an electronic device from damage.
- Resistors protect sensitive electronics by limiting the amount of electricity that can flow to the device through the resistor, and therefore preventing power spikes.

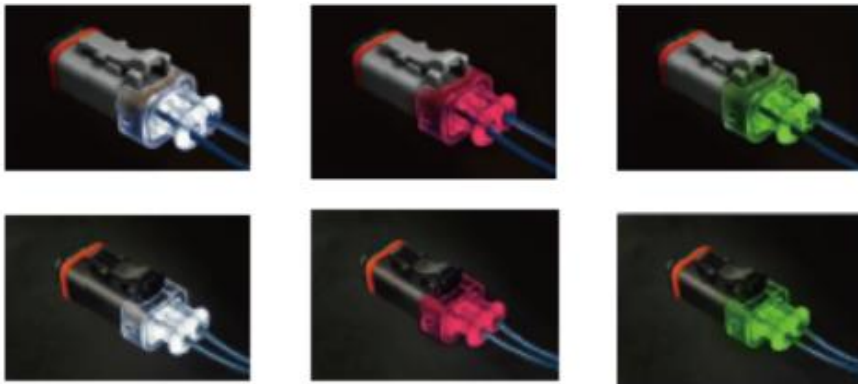
Technical Data

- AT series 2, 4 positions available.



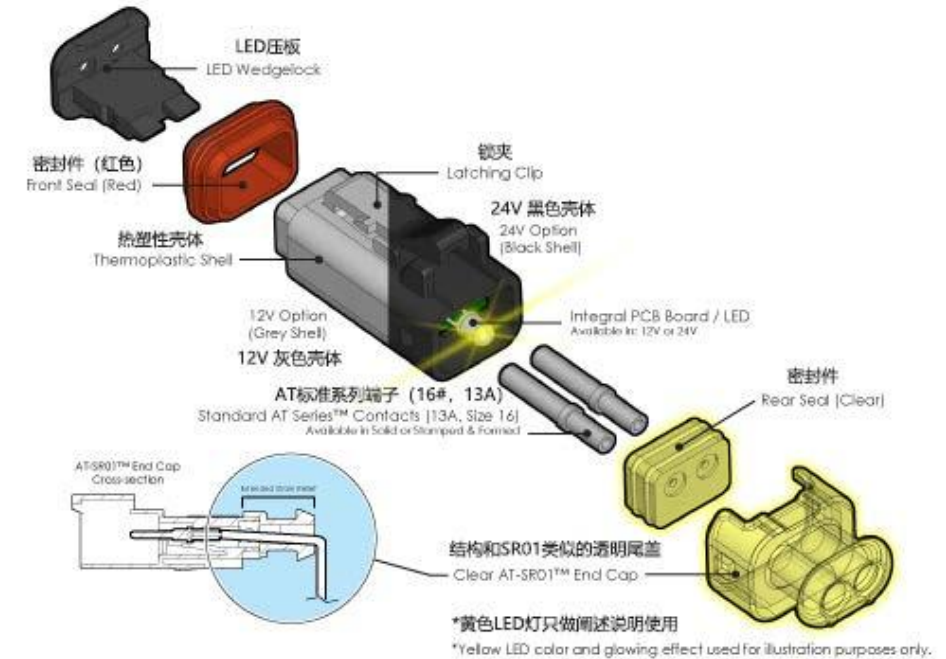
2 position LED optional

- Designed for electromechanical applications where a visible LED light is integrated into a 2 position plug allowing the user to determine the device is receiving power. Environmentally sealed, field serviceable and cost effective while reducing costly trouble shooting time. 12V and 24V versions available. Diode protected.



12V

24V



ARC Series

- The ARC series is a series of rectangular connectors currently available in 24/40/50/70 holes with 16# terminals. The connector does not require a wedge lock. Terminals are inserted and removed in the same way as the AHDP series. Terminals are removed using AT11-310-1605.



ARB Series

- The ARB series is a series of rectangular connectors currently available in 48/102 pos. The connector require a wedge lock. Terminals are inserted and removed in the same way as the AT series. Terminals are removed using ATRT-100.
- Suitable for harsh environments in on-road and off-road, Marine, industrial and agricultural markets.



ARB Series

- The ARB series is a series of rectangular connectors currently available in 48/102 pos. The connector require a wedge lock. Terminals are inserted and removed in the same way as the AT series. Terminals are removed using ATRT-100.
- Suitable for harsh environments in on-road and off-road, Marine, industrial and agricultural markets.



102pin

ARMOR IPX series

- ARMOR IPX product that accept snap-in headers are available. The enclosure features a through hole mounting flange.
- Existing PCB connectors: ATM 2x12/12 pin, AT 12,24,36,48 pin



Boots

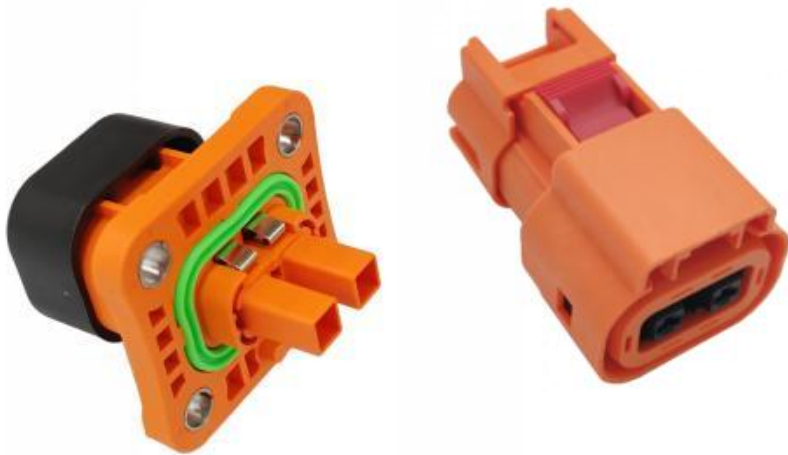
- Boots provide a professional looking finishing touch for A series connectors. Made of durable plastic, these slip-on boots are not only aesthetically appealing, but also provide increased protection from dirt, paint overspray, and pressure washing. The plastic boots are rated from -29° C to +100° C and offer a slip-on design making installation quick and easy.



JAEVS Series

Technical Data

- Pin number: 2(+2 HVIL)
- Wire size: 2.5mm²~6.0mm²
- Rated Current: 2.5mm² 20A, 4.0mm² 30A, 6.0mm² 40A
- Rating voltage: 1000V AC/DC
- Protection rate: IP67, IP69K(Mated) IP2XB(Unmated)
- Mating cycles: 100+
- Shield: 360°
- CPA: With
- Available keys: A,B,C,D



ATHP Series



Technical Data

- Quick Lock and Press-to-Release Design
- 360° rotating plug
- Various termination option(Threaded, Crimp, Busbar)
- Compact robust design
- Wire size: 16mm² , 25mm² , 35mm² ,50mm² , 70mm² ,90mm²
- Rated Current: 16mm² 100A, 25mm² 120A, 35mm² 130A, 50mm² 200A, 70mm² 300A, 90mm² 350A
- Rating voltage: 1000V AC/DC
- Protection rate: IP67, IP69K(Mated) IP2XB(Unmated)
- Mating cycles: 500
- Available keys: A,B

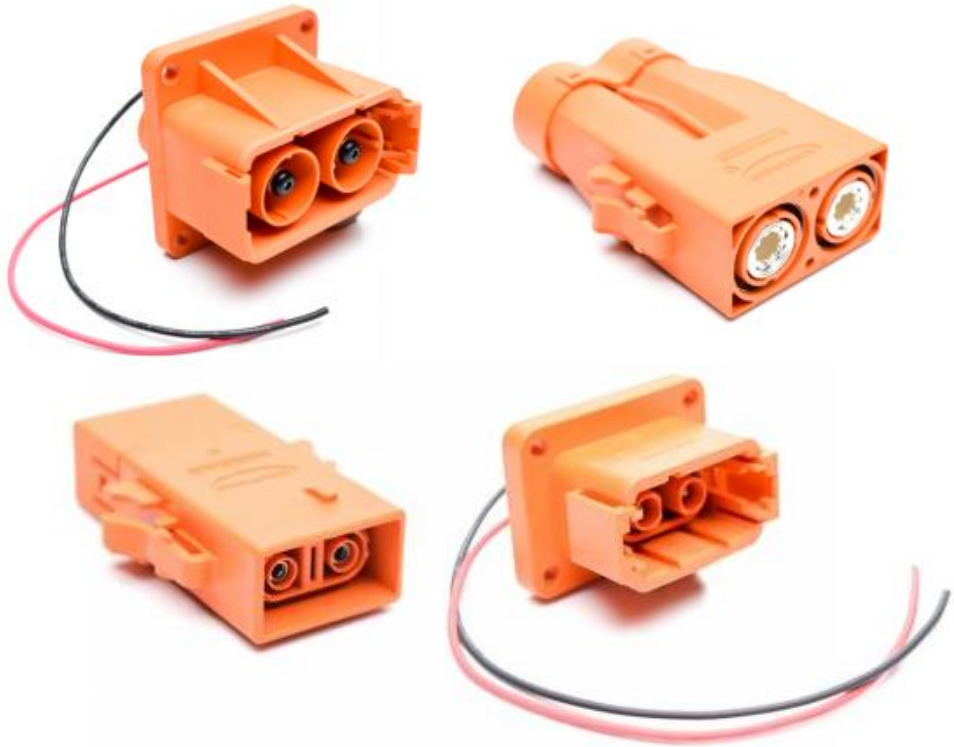
ATHP Series



Technical Data

- Quick lock and press-to-release design
- 360° rotating plug
- Various termination option(Threaded, Crimp, Busbar)
- Compact robust design
- Rating voltage: 1000V AC/DC
- 8.0mm contact, 50mm² @ 180A
35mm² @ 130A
25mm² @ 120A
- Mating cycles: 200+
- IP67 rated in mated condition

ATHP Series



Technical Data

- Features Amphenol's **RADSOK®** contact technology
- HVIL with shielding and unshielded solutions
- Rating voltage: 1000V AC/DC
- Test voltage: 5000V AC/DC
- Current rating of 20A for the 2.5mm² wire, 25A for the 4mm² wire, 35A for the 6mm² wire, 180A for the 50mm² wire.
- Mating cycles: 100+
- IP67 & IP 69K rated in mated condition

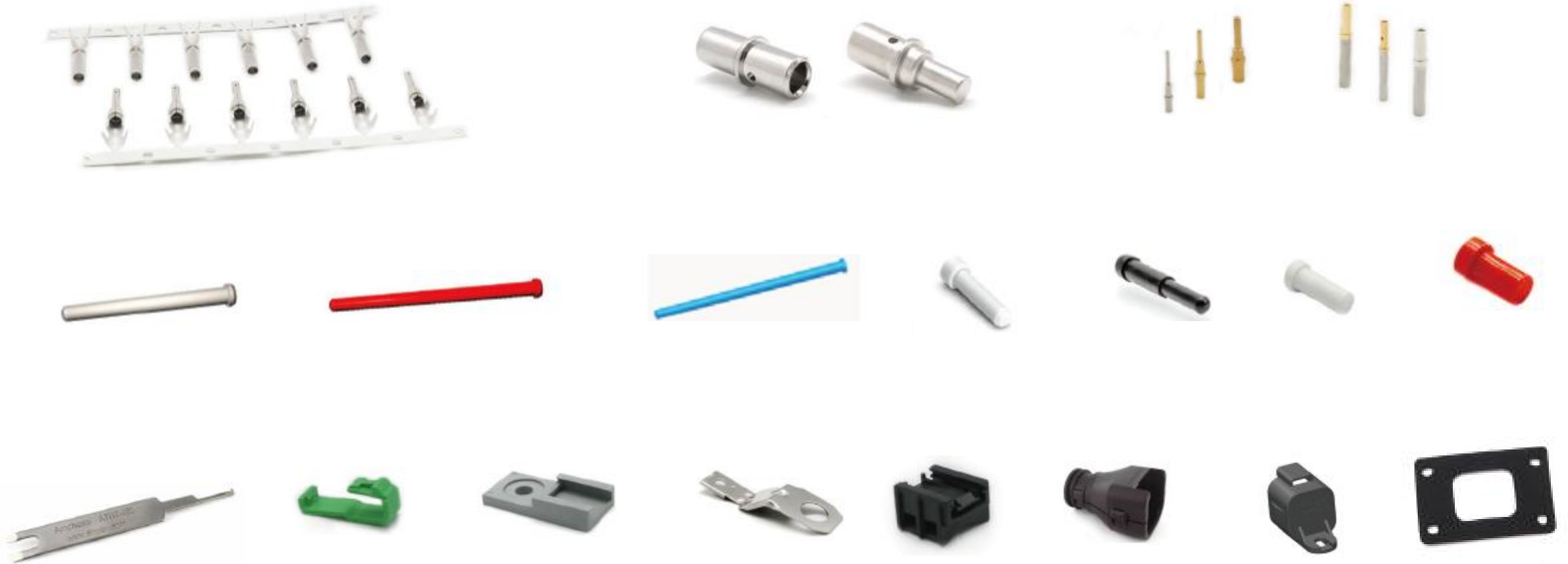
TWC Series



Technical Data

- Pin number: 2,3 Pos
- Available keys: A,B,C,D
- Wire size: 25mm²~120mm²
- Rated current: 25mm² 100A, 35mm² 100A, 50mm² 200A, 70mm² 250A, 95mm² 300A, 120mm² 400A
- Operation voltage: 1000VDC
- Protection rate: IP67, IP69K(Mated), IP2XB(Unmated)
- Durability: 100+
- Temperature range: -40° C To 125° C
- Application fields: Inverters, chargers, etc.

Optional accessories



Custom Cable Assembly - signal transmission



Applications of A series

Automotive



MARINE



**HEAVY
EQUIPMENT**



Diagnostics



AGRICULTURE



Mining



**POWER
GENERATION**



**WATER
RESISTANT**



**HARSH
ENVIRONMENT**



Railway



TWC series success story



- **Country:** China
- **Application:** E-Truck Platform
- **Product:** TWC series



JAEVS series success story



- **Country:** China
- **Application:** Pack, Controller
- **Product:** JAEVS series



JAEVS series success story



- **Country:** China
- **Application:** Pack, All Terrain Vehicle
- **Product:** JAEVS series



乘用车PACK



A series success story



- **Country:** India
- **Application:** Generator set control unit
- **Product:** AHD series



A series success story



- **Country:** China
- **Application:** LED road light
- **Product:** AT series



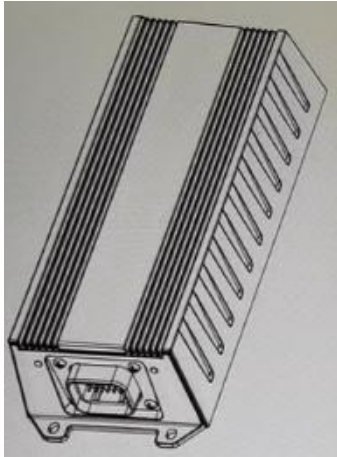
A series success story



- **Country:** China
- **Application:** Intelligent control box
- **Product:** AT 26pin



A series success story



- **Country:** China
- **Application:** Sound equipment
- **Product:** AT 26pin



A series success story



- **Country:** China
- **Application:** Remote information controller
- **Product:** AT&ATM series



A series success story



- **Country:** China
- **Application :** Climbing machine
- **Product :** AHDP series



A series success story



- **Country:** China
- **Application :** Heavy Industries
- **Product :** AHDM series



A series success story



- **Country:** China
- **Application:** Excavator
- **Product:** AT series



A series success story



- **Country:** Japan
- **Application:** ECU
- **Product:** ATF13-4P-BM11



A series success story



- **Country:** China
- **Application:** hydraulic excavator
- **Product:** A series



A series success story



- **Country:** China
- **Application:** Chassis dashboard power supply
- **Product:** ATHD04-1-4P-L009 + ATHD06-1-4S



A series success story



- **Country:** China
- **Application:** Solar Panel for Vehicle
- **Product:** ATP 2P



A series success story



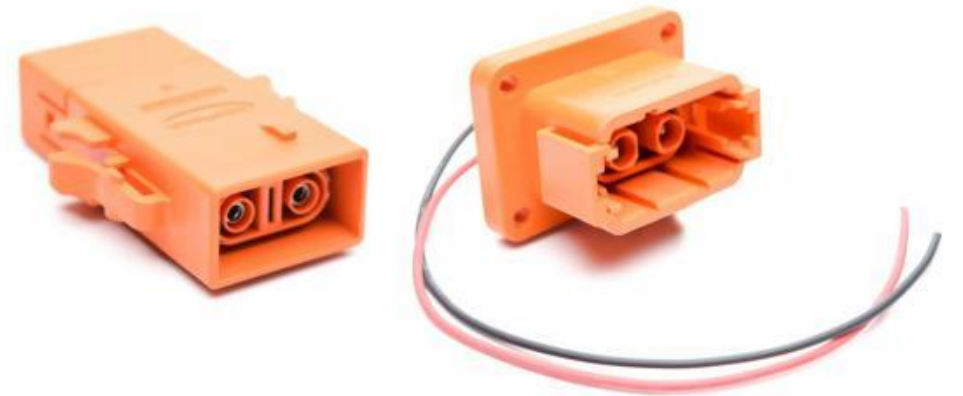
- **Country:** Korea
- **Application:** electric bus air conditioning system
- **Product:**
P81024/P81025/P81063/P81298/P81535/P81556



ATHP series success story



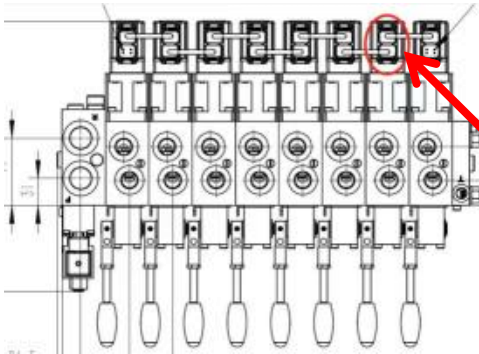
- **Country:** China
- **Application:** Battery pack
- **Product:** ATHP 2.5



A series success story



- **Country:** China
- **Application:** Hydraulic equipment
- **Product:** AT series



A series success story



- **Country:** China
- **Application:** LED Light for Vehicle
- **Product:** AT 2-6P & ATP 2/4P



A series success story



- **Country:** Japan
- **Application:** Excavator
- **Product:** A series



A series success story



- **Country:** China
- **Application:** Agricultural machinery
- **Product:** AT13/AT15



A series success story



- **Country:** China
- **Application:** Engine cable harness
- **Product:** Cylinder piercing parts (A series customized)



A series success story



- **Country:** China
- **Application:** Heavy truck engine wiring harness
- **Product:** AT series



A series success story



- **Country:** China
- **Application:** New energy battery
- **Product:** AT 2P



A series success story



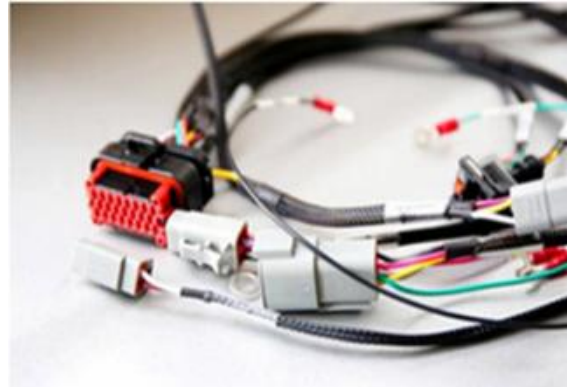
- **Country:** China
- **Application:** High pressure box ,Electric sanitation vehicle
- **Product:** AT04-2P-PM11



A series success story



- **Country:** China
- **Application:** On-board gating system wiring harness
- **Product:** AT series



A series success story



- **Country:** China
- **Application:** Transformer
- **Product:** ATM 6P, 12P



A series success story



- **Country:** China
- **Application:** Power battery PACK
- **Product:** AT 12P



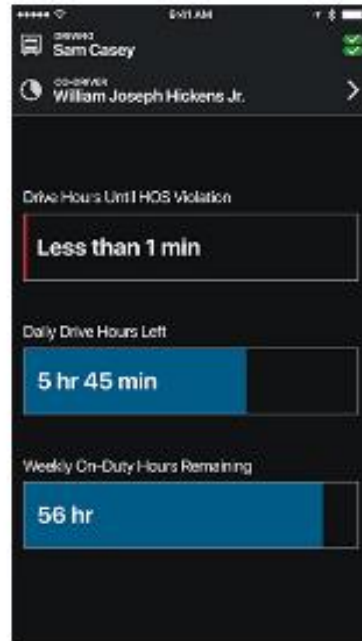
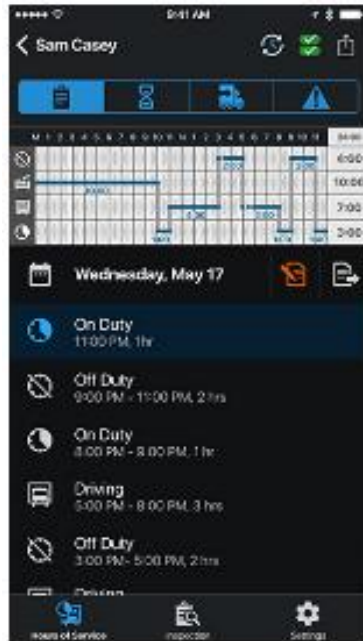
A series success story



- **Country:** China
- **Application:** Mining equipment
- **Product:** AT 4pin, 12pin & AHDP series



AHD series success story



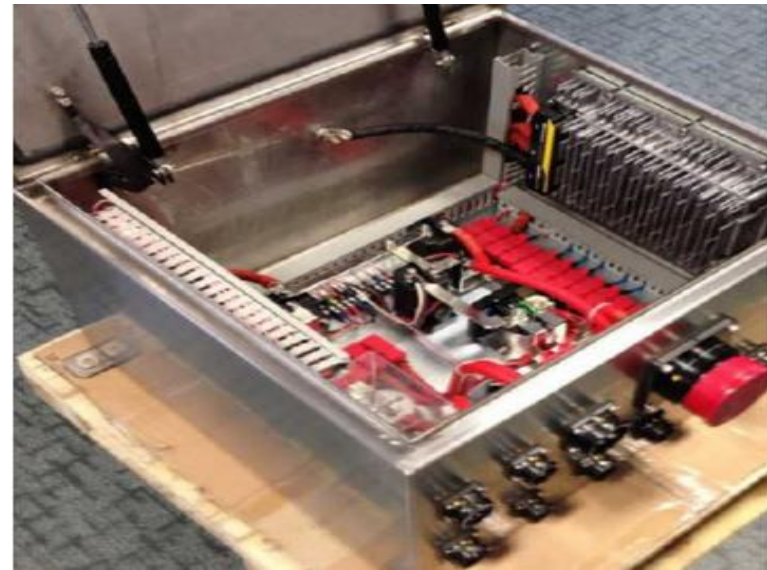
- **Application Area: Europe**
- **Application:** Record the speed, distance and location for Bus
- **Product :** AHD series



A series success story



- **Country :** China
- **Application:** New energy vehicle high voltage control box
- **Product:** AT panel & RT series



A series success story

- **Country :** USA
- **Application:** BMS for Marine equipment
- **Product:** ATV 18PIN



A series success story



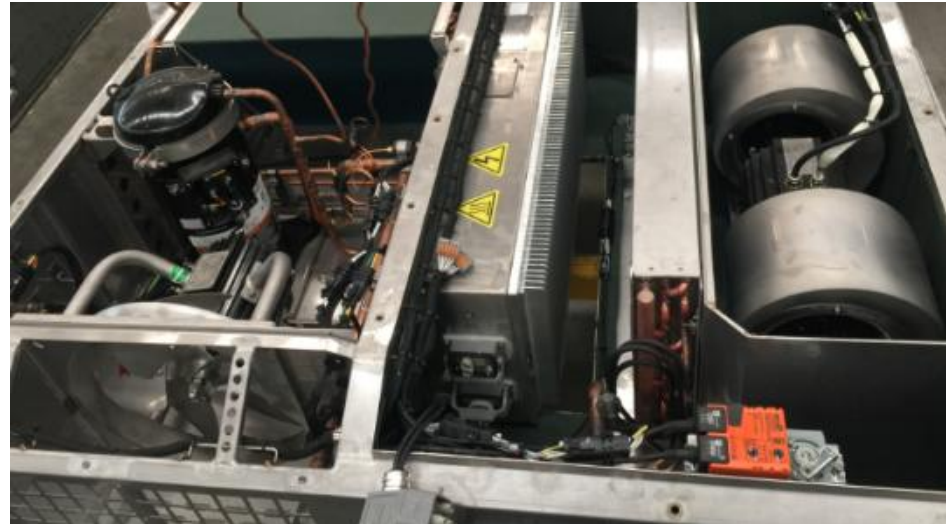
- **Country :** China
- **Application:** Cotton Picker transmission wire harness
- **Product:** AT LED 2PIN



A series success story



- **Country :** China
- **Application:** Air conditioning system for rail transit
- **Product:** A series



A series success story



- **Country :** China
- **Application:** wind driven generator
- **Product:** AT04-6P-PM05/AT06-6S
RTS714N3PHEC03/RTS6BS14N3SHEC03



Servo control connectors - Motion series

The M Series™ MotionGrade™ DIN Style Connectors are ideally suited for advanced servo drive encoder feedback applications, packaging, robotic, printing, machine tool, medical and automation environments where control signal transmission or power are required in a robust and compact delivery system.

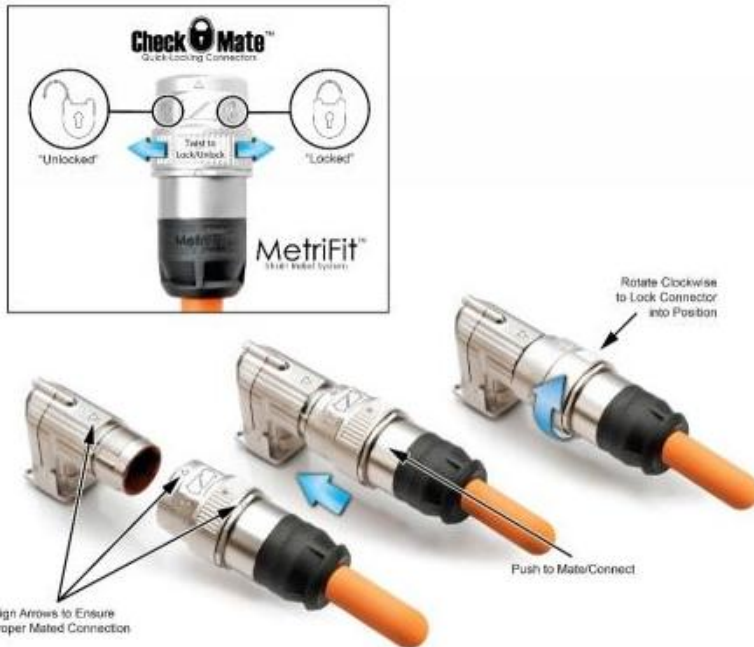


The first generation M23 threaded connectors

- 6, 8, 9, 12, 16, 17 and 19 positions available
- 10A Max Current; 160V (12 pos), 125V (16-17 pos); 18-26AWG (12-17 pos)
- 30A Max Current; 630V Max Voltage; 14-16AWG (6-9 pos)
- **Standard Design: Fixed rear insertion design**
- **Standard Design: Back cap removal**
- **Standard Design: Installation occurs from the bottom of base through the back of the shell.**
- **Standard Design: Traditional connector assembly**
- **Standard Design: Extraction tools required**
- UL1977. ROHS Compliant

The second generation Checkmate series

CheckMate™ Quick-Locking System



- 6, 8, 9, 12, 16, 17 and 19 positions available.
- Enhanced next generation anti-vibration dual-ratcheting coupling system.
- Checkmate™ is intermateable and compatible with rival M23 quick coupling products.
- Distinctive alignment arrows with lock/unlock identifiers (ensures a solid connection every time)

MetriFit™ Strain Relief System

The Metrifit™ Strain Relief System provides maximum 360° EMI/RFI shielding, with advanced sealing capability (IP67) suitable for harsh environments. Tamper proof design ensures a safe and secure system.

The third generation Elite series



M23 Elite Connectors

- 6, 8, 9, 12, 16, 17 and 19 positions available
- 10A Max Current; 160V (12 pos), 125V (16-17 pos); 18-26AWG (12-17 pos)
- 30A Max Current; 630V Max Voltage; 14-16AWG (6-9 pos)
- UL1977, file no. is E336830 & E491265.
- **Elite Design: Top loading insert design; Front cap removal**
- **Elite Design: Loose piece insert for hand held installation ease**
- **Elite Design: Alignment tabs on the insert to help guide the insert into place**
- **Elite Design: Two flange size options to choose from**
- **Elite Design: No extraction tools required**

M40 Series



M40 Standard Connectors

- 6 and 8 positions available
- 75A Max Current; 630V Max Voltage; 8-12AWG

Hybrid Series



Hybrid DMC™ Connectors

- 2 Power + PE + 1 Signal + 4 Quad Element Ethernet
- 18A (2.0mm), 1A (1.0mm), 0.5A (Quad Element) Max Current
- 850V (2.0/1.0mm Contacts), 30VDC (Quad Element) Max. Voltage
- UL1977, file no. is E336830.

Custom cable assembly-M23 & M40



Applications of Motion series



INDUSTRIAL



ON-MACHINE



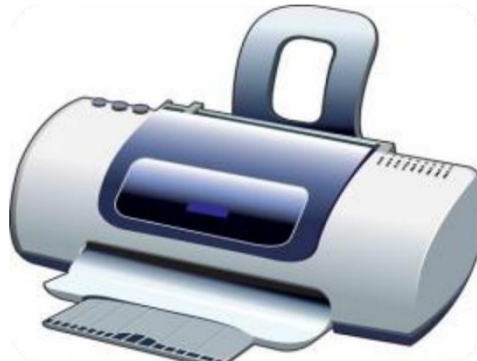
PACKAGING MACHINERY



DISTRIBUTED POWER



MOTION CONTROL



Printer



MEDICAL



COMMUNICATIONS

Servo control connectors success story



- **Country:** China
- **Application:** Power/control power/servo system
- **Product:** PowerBoss Lite/Mini/ Motion Cable Assy



Servo control connectors success story



- **Country:** Worldwide
- **Application:** Power/Signal Distribution, VFD, Servo Motor
- **Product:** PowerBoss Lite/Mini/Motion Cable Assy



Servo control connectors success story



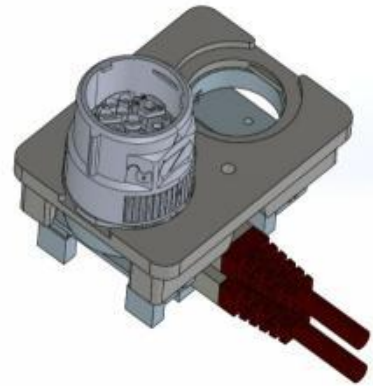
- **Country:** China
- **Application:** Industry robot
- **Product:** M23 standard series



Servo control connectors success story



- **Country:** Japan
- **Application:** Servo Motors
- **Product:** M23 Hybrid DMC



- **Country:** North America
- **Application:** Power/Control for Welding Systems
- **Product:** M23 connector and cable assembly

Factory Automation

Our Factory Automation - Distributed Power and Control product lines were developed in response to the need for robust, streamlined and scalable products for use in robotic and material handling systems, such as: conveyors, sorting, automated storage and retrieval, packaging, overhead transport, palletizing and any other options imaginable.



Custom Molded Cable Assembly Solutions

Amphenol Sine Systems offers custom molded cable assembly solutions across all our standard product lines. If one of our standard products doesn't fit your specific needs, our Engineers will work with you to custom design a solution specific to your application. Whether you are looking for a customized connector solution, a complete turn-key cable assembly solution, custom wiring to simplify machine assembly or a specific mold color, Amphenol Sine Systems is your one source for proven, reliable and innovative results.



Custom Cable Assembly Solutions

Diagnostic

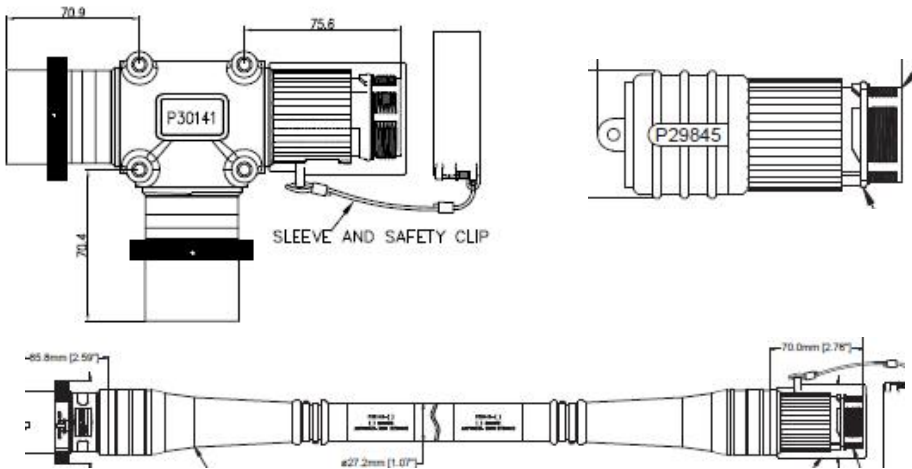


Custom Ethernet Cable Assembly Solutions

M12 & M22



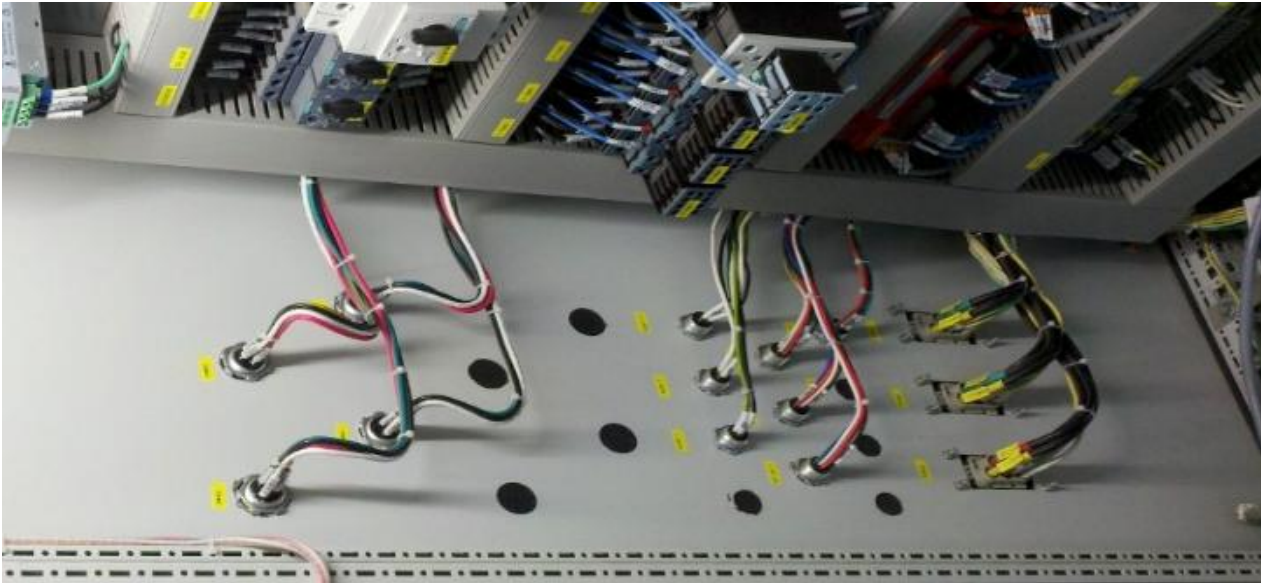
Cable Assembly success story



- **Country:** China
- **Project:** Power supply transmission
- **Product:** M40 Assy~P29845/P30141/P30142-M*/P80614-M*



Cable Assembly success story

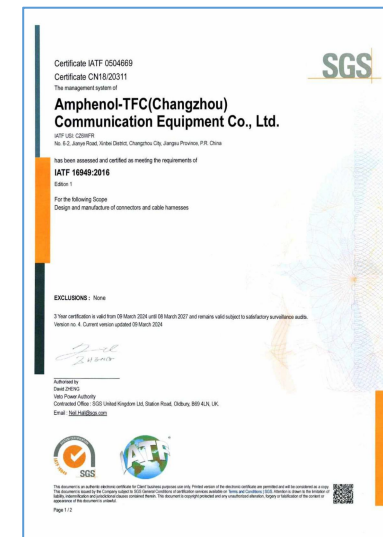
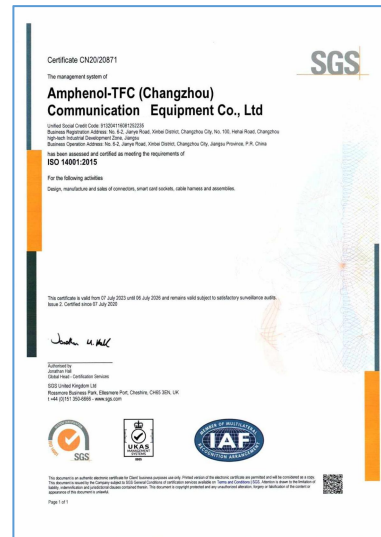
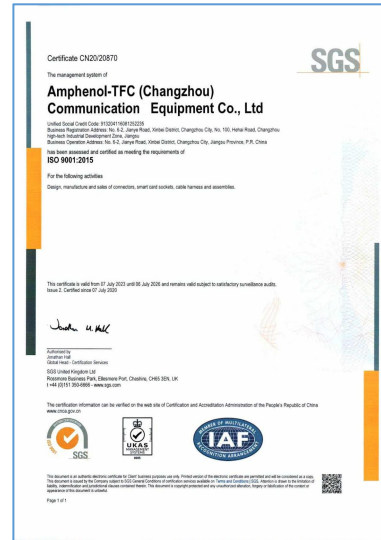


- **Country:** China
- **Project:** plate Cabinet cable assembly
- **Product:** cable assembly

Quality System Certification

IATF 16949

ISO 9001 ISO 14001



Continuous Improvement & Perfect Pursue



Quality Control

Supplier Control

- Estimate supplier
- Regular Audit
- Continuous track on quality
- Quality improvement plan

Qualified Supplier
First Safeguard

Stock Control

- Kindee system
- Incoming Inspection
- Appearance Inspection
- Key parameter check
- Certification, validity, packaging, normative testing, etc

Incoming Materials Control
Secondly Safeguard

Process Control

- Small batch inspection
- Sampling during production
- Process & quality control
- FG OQC inspection
- Label tracking
- PM & Calibration

Process Control
Thirdly Safeguard

Customer Support

- Customer complaints response and report
- Customer site inspection support
- Customer Satisfaction Research & follow

Customer Follow up
Last Safeguard

AIIO China Main customers



RENAULT



北汽集团
BAIC GROUP



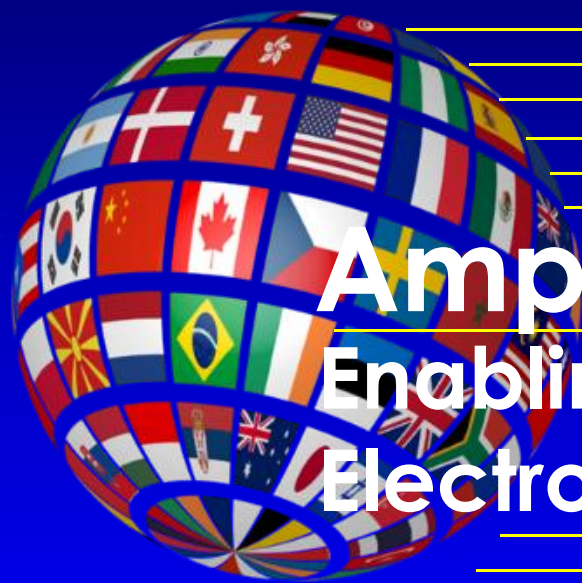
CATL

E-POW 亿能电子



AIO China Main customers





Amphenol

Enabling the Electronics Revolution